

JOB NAME:

QUANTITY:

ITEM NO.:

PRODUCT NAME:

TWIST WASTE VALVE

_____ SPECIAL CONFIGURATION
(CHECK BASE MODEL AND OPTIONS)

MODEL:

24864 WITH BASKET STRAINER

OPTIONS OR MODIFICATIONS:

OTHER _____

FEATURES:

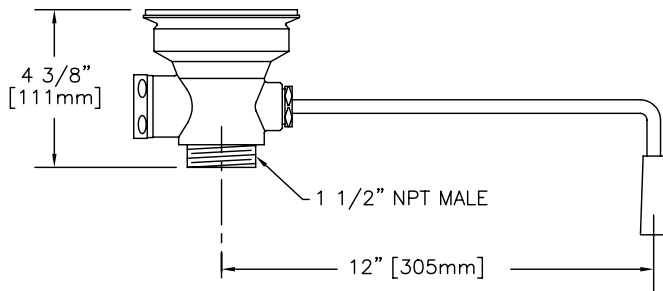
- * 3 1/2" SINK OPENING
- * 1 1/2" DRAIN OPENING
- * CAST BRONZE BODY AND WORKING PARTS
- * CHROME PLATED BODY AND WORKING PARTS
- * BASKET STRAINER
- * CSA CERTIFIED

DRAIN RATE:

- * 12 GPM

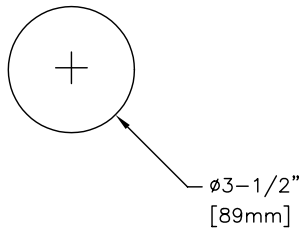
SHIPPING WEIGHT

- * 3.8 LBS



ROUGH-IN:

DRAIN:



ANSI/A112.18.1M

Distributed by Fisher Manufacturing Company
 P.O. Box 60 Tulare, CA 93725-0060
 Phone 800-421-6162 FAX 800-8-FAUCET (800-832-8238)